

School Bag

Fabric. Heavy to middle weight, strong and non shrink fabric.

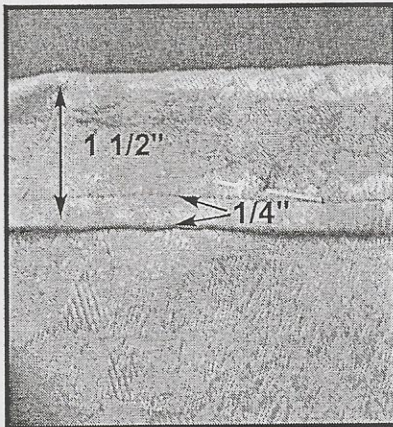
Velcro. 1" x 3" for each



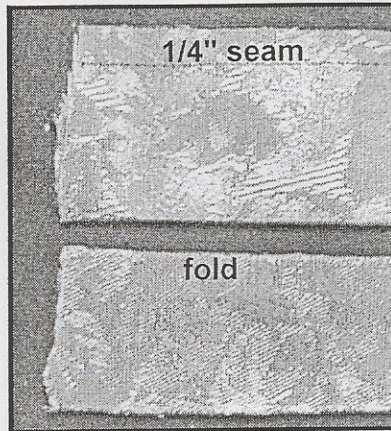
1 Cut one piece of fabric 14" x 36" and fold it right sides together in half so it measures 14" x 18". Seam then serge or zig-zag the raw edges, leaving the top open.

or

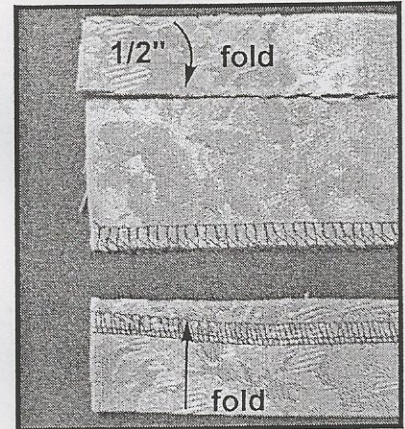
Cut two pieces of fabric that measure 14" x 18". Place them right sides together. Sew three sides using a 1/4" seam allowance then serge or zig-zag the three sides, leaving the top open.



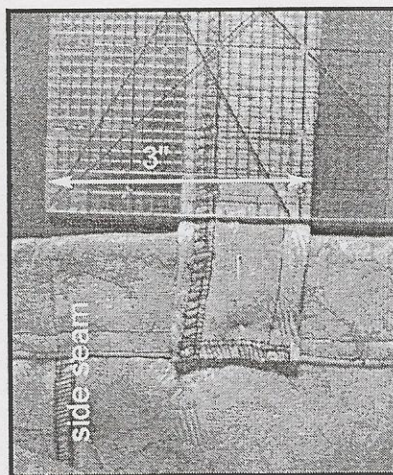
2 Turn the open top 1/4" to the wrong side of the fabric to finish the edge. Next, turn this 1/4" finished edge 1 1/2" to the wrong side of the fabric to make a hem for the bag opening. Machine sew the hem.



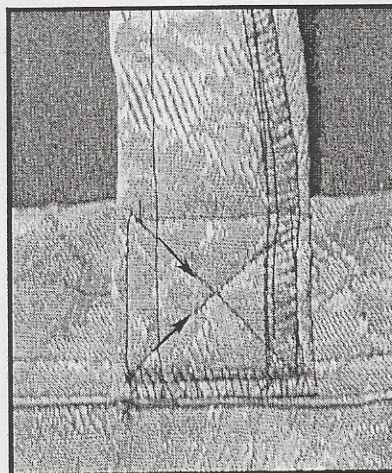
3 Cut two handles that measure 3 1/2" x 24". There are two ways to finish these handles. The first method is to fold them right sides together, lengthwise and sew a 1/4" seam lengthwise. Turn the handles right side out and serge or zig-zag the ends.



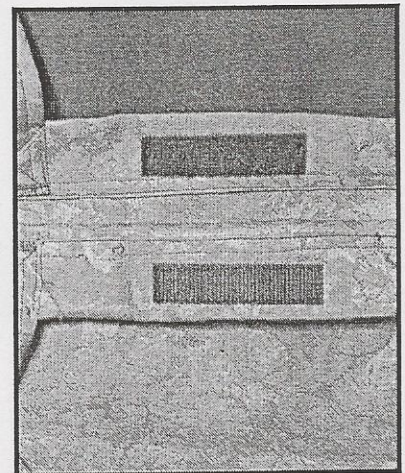
4 The second method is to serge one long edge of each handle. Turn the unserged long edge 1/2" toward the middle, wrong sides together. Turn the serged long edge to meet the fold of the opposite side. Top-stitch long sides 1/4" from the folded edge. Serge the ends.



5 Place one end of a handle 3" from the side seam and aligned with the hem.



6 Machine sew an X as shown to secure the handle. Repeat this for the other three handle ends.



7 Sew a 3" length of 1" wide velcro centered on the insides of the bag and hem. The bag is finished.